



find *exactly* what you're looking for

**1347 West Eddy • Unit 406**

*Lakeview*



- **Great Southport Corridor Location**
- **Penthouse Corner Unit**
- **Three Blocks from the Brown Line**

**2 BEDROOM | 2 BATHROOM**

find *exactly* what you're looking for

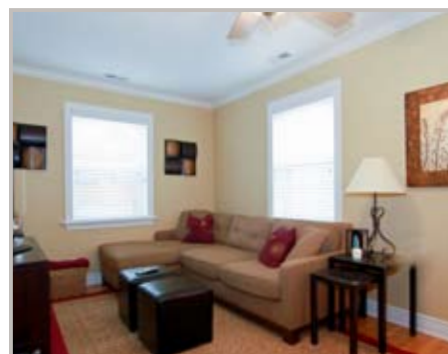
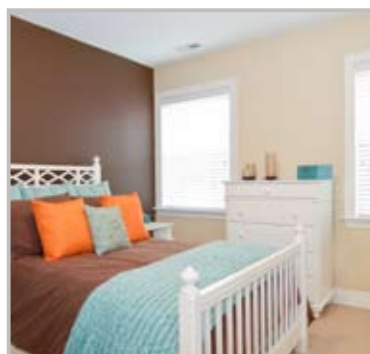
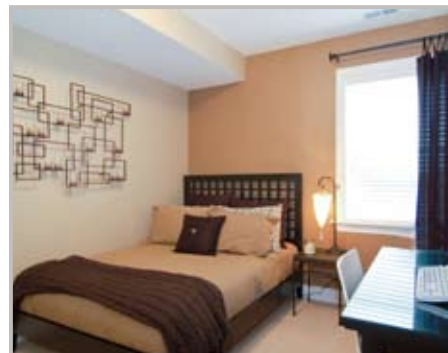
## 1347 West Eddy • Unit 406

*Lakeview*

Sun filled corner penthouse unit in Southport corridor. Meticulously finished with high end granite countertops, stainless steel appliances & stone tile baths. Unit features hardwood floors, central A/C and washer & dryer. Tandem parking available. You will enjoy the location but love this unit even more!!

### *Highlights*

- Granite Countertops
- Stainless Steel Appliances
- Hardwood Flooring
- 2 Beds / 2 Baths
- A/C and Washer & Dryer
- Ample Closets
- Storage Unit
- Tandem Parking Space Avail.



**Julius Dickens**

**312.698.8568 office**

**312.451.8894 mobile**

1950 N. Sedgwick St.  
Chicago, Illinois 60614

[www.DreamTown.com](http://www.DreamTown.com)

